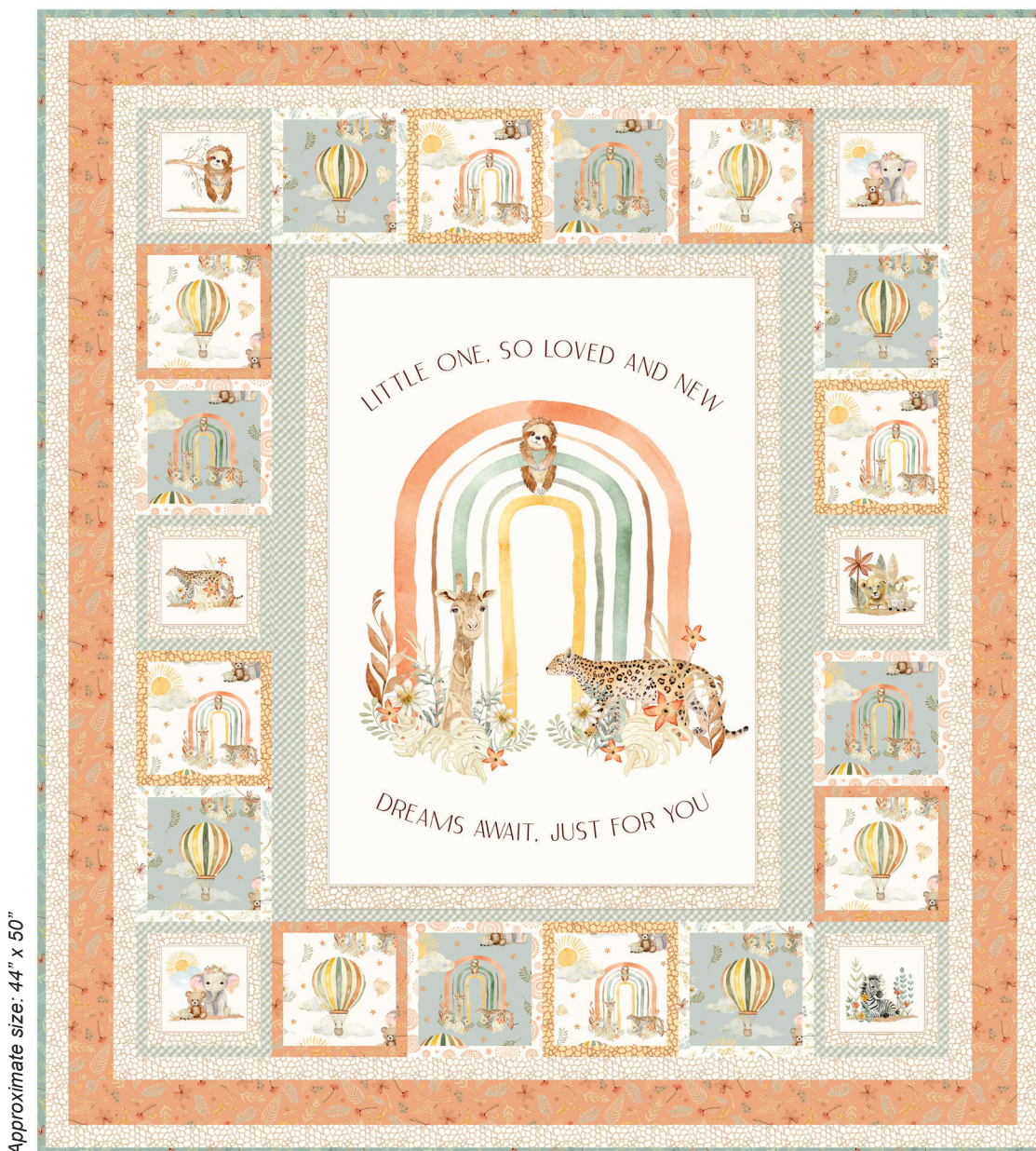


# Mini Menagerie

Mini Menagerie Panel Quilt designed by Cyndi Hershey



*Featuring fabrics from the Mini Menagerie fabric collection  
by Audrey Jeanne Roberts*

P&B Textiles • [pbtex.com](http://pbtex.com) • 800-351-9087 • 208 Clock Tower Square, Portsmouth, RI 02871



# Mini Menagerie

Fabric collection by Audrey Jeanne Roberts  
Mini Menagerie Panel Quilt designed by Cyndi Hershey  
Finished size approximately: 44" x 50"

## Yardage:

<b>Fabric A</b>	MMEN6115-PA .....	1 panel
<b>Fabric B</b>	MMEN6117-E .....	3/4 yard
<b>Fabric C</b>	MMEN6117-LT .....	3/4 yard
<b>Fabric D</b>	MMEN6119-E .....	1/8 yard
<b>Fabric E</b>	MMEN6119-J .....	5/8 yard
<b>Fabric F</b>	MMEN6119-T .....	1/2 yard
<b>Fabric G</b>	MMEN6120-E .....	1/2 yard
<b>Fabric H</b>	MMEN6120-Y .....	1/8 yard
<b>Fabric I</b>	MMEN6121-EJ .....	1/8 yard
<b>Fabric J</b>	MMEN6122-G .....	3/8 yard
<b>Backing</b>	.....	3 yards
<b>Batting</b>	.....	52" x 58"

## Cutting Instructions:

Please read all instructions carefully before beginning. Strips are cut across the width of fabric **WOF** (perpendicular to selvages) unless otherwise stated. All seams are sewn with 1/4" seam unless otherwise stated. Label all pieces.

### Fabric A:

- Fussy cut one 21 1/2" x 29 1/2" rectangle centered on the panel. **(Quilt Center)**
- Fussy cut six 5 1/2" squares each centered on a block. **(Blocks)**

### Fabric B:

- Fussy cut four 5 1/2" squares each centered on a balloon motif. **(Blocks)**
- Fussy cut four 5 1/2" squares each centered on a rainbow motif. **(Blocks)**

### Fabric C:

- Fussy cut four 5 1/2" squares each centered on a balloon motif. **(Blocks)**
- Fussy cut four 5 1/2" squares each centered on a rainbow motif. **(Blocks)**

### Fabric D:

- Cut three 1" x WOF strips; sub-cut eight 1" x 5 1/2" rectangles and eight 1" x 6 1/2" rectangles. **(Blocks)**

### Fabric E:

- Cut three 1" x WOF strips; sub-cut eight 1" x 5 1/2" rectangles and eight 1" x 6 1/2" rectangles. **(Blocks)**
- Cut five 2 1/2" x WOF strips. Sew together the strips end to end with diagonal seams. Trim seams to 1/4" and press open. From this pieced strip cut two 2 1/2" x 42 1/2" strips and two 2 1/2" x 44 1/2" strips. **(Middle Border)**

### Fabric F:

- Cut five 2 1/2" x WOF strips. **(Binding)**

### Fabric G:

- Cut four 1 1/2" x WOF strips. Sew together the strips end to end with diagonal seams. Trim seams to 1/4" and press open. From this pieced strip cut two 1 1/2" x 38 1/2" strips and two 1 1/2" x 42 1/2" strips. **(Inner Border)**
- Cut five 1 1/2" x WOF strips. Sew together the strips end to end with diagonal seams. Trim seams to 1/4" and press open. From this pieced strip cut two 1 1/2" x 44 1/2" strips and two 1 1/2" x 48 1/2" strips. **(Outer Border)**

### Fabric H:

- Cut three 1" x WOF strips; sub-cut eight 1" x 5 1/2" rectangles and eight 1" x 6 1/2" rectangles. **(Blocks)**

### Fabric I:

- Cut three 1" x WOF strips; sub-cut eight 1" x 5 1/2" rectangles and eight 1" x 6 1/2" rectangles. **(Blocks)**

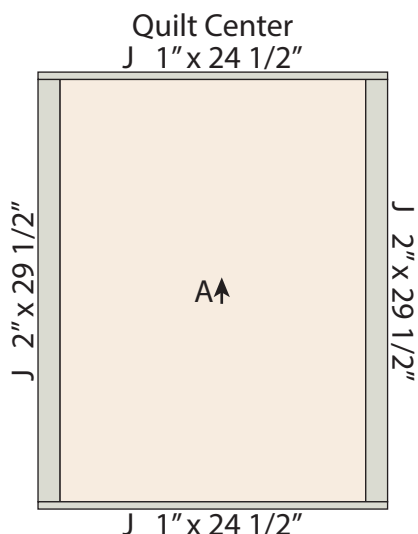
### Fabric J:

- Cut four 1" x WOF strips; sub-cut twelve 1" x 5 1/2" rectangles and twelve 1" x 6 1/2" rectangles. **(Blocks)**
- Cut two 1" x WOF strips; sub-cut two 1" x 24 1/2" strips. **(Quilt Center)**
- Cut two 2" x WOF strips; sub-cut two 2" x 29 1/2" strips. **(Quilt Center)**

## Piecing Instructions:

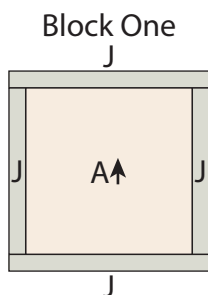
Note: Arrows in diagrams represent the fabric print direction. Pay attention to the fabric and unit orientations while assembling the various components.

1. Sew one 2" x 29 1/2" **Fabric J** strip to each side of the 21 1/2" x 29 1/2" **Fabric A** rectangle. Sew one 1" x 24 1/2" **Fabric J** strip to the top and bottom of the **Fabric A** rectangle to make the 24 1/2" x 30 1/2" Quilt Center. (Diagram 1)



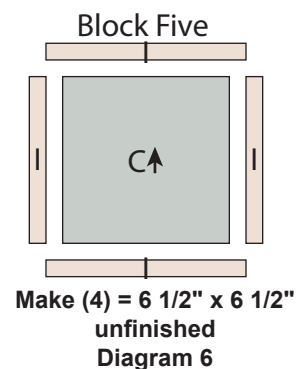
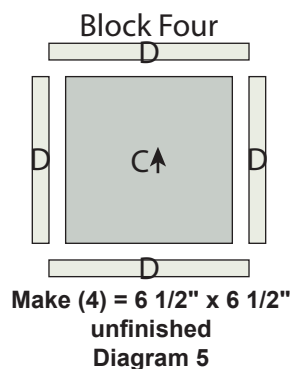
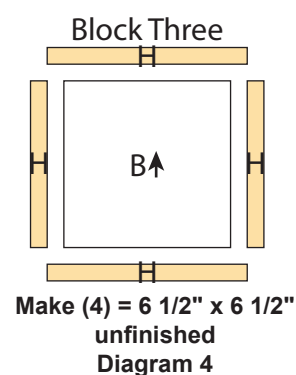
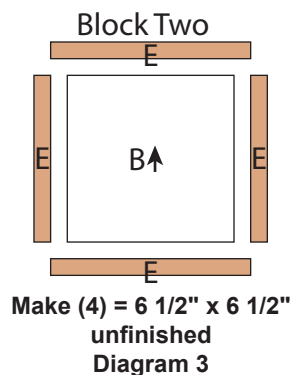
Make (1) = 24 1/2" x 30 1/2" unfinished  
Diagram 1

2. Sew one 1" x 5 1/2" **Fabric J** rectangle to each side of one 5 1/2" **Fabric A** square. Sew one 1" x 6 1/2" **Fabric J** rectangle to the top and bottom of the **Fabric A** square to make one 6 1/2" Block One square. (Diagram 2) Repeat to make an additional five Block One squares.

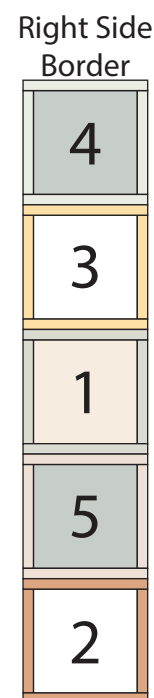
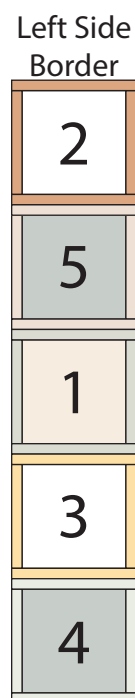


Make (6) = 6 1/2" x 6 1/2" unfinished  
Diagram 2

3. Repeat Step 2 and refer to Diagrams 3-6 for fabric identification, placement and orientation to make four of each block squares for Block Two through Block Five.

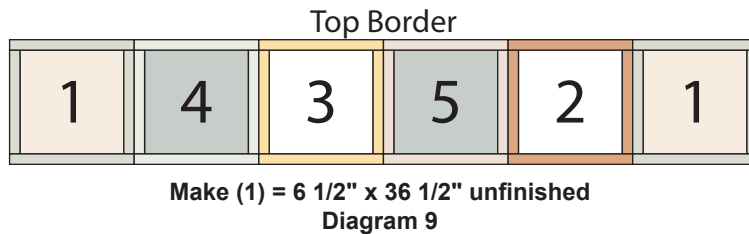


4. Sew together one Block Two square, one Block Five square, one Block One square, one Block Three square and one Block Four square, in that order from top to bottom, to make the 6 1/2" x 30 1/2" Left Side Border. (Diagram 7)
5. Sew together one Block Four square, one Block Three square, one Block One square, one Block Five square and one Block Two square, in that order from top to bottom, to make the 6 1/2" x 30 1/2" Right Side Border. (Diagram 8)

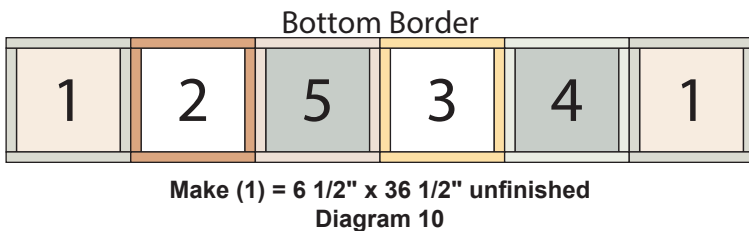




6. Sew together one Block Four square, one Block Three square, one Block Five square and one Block Two square in that order from left to right. Sew one Block One square to each end of the newly sewn strip to make the 6 1/2" x 36 1/2" Top Border. (Diagram 9)



7. Sew together one Block Two square, one Block Five square, one Block Three square and one Block Four square in that order from left to right. Sew one Block One square to each end of the newly sewn strip to make the 6 1/2" x 36 1/2" Bottom Border. (Diagram 10)

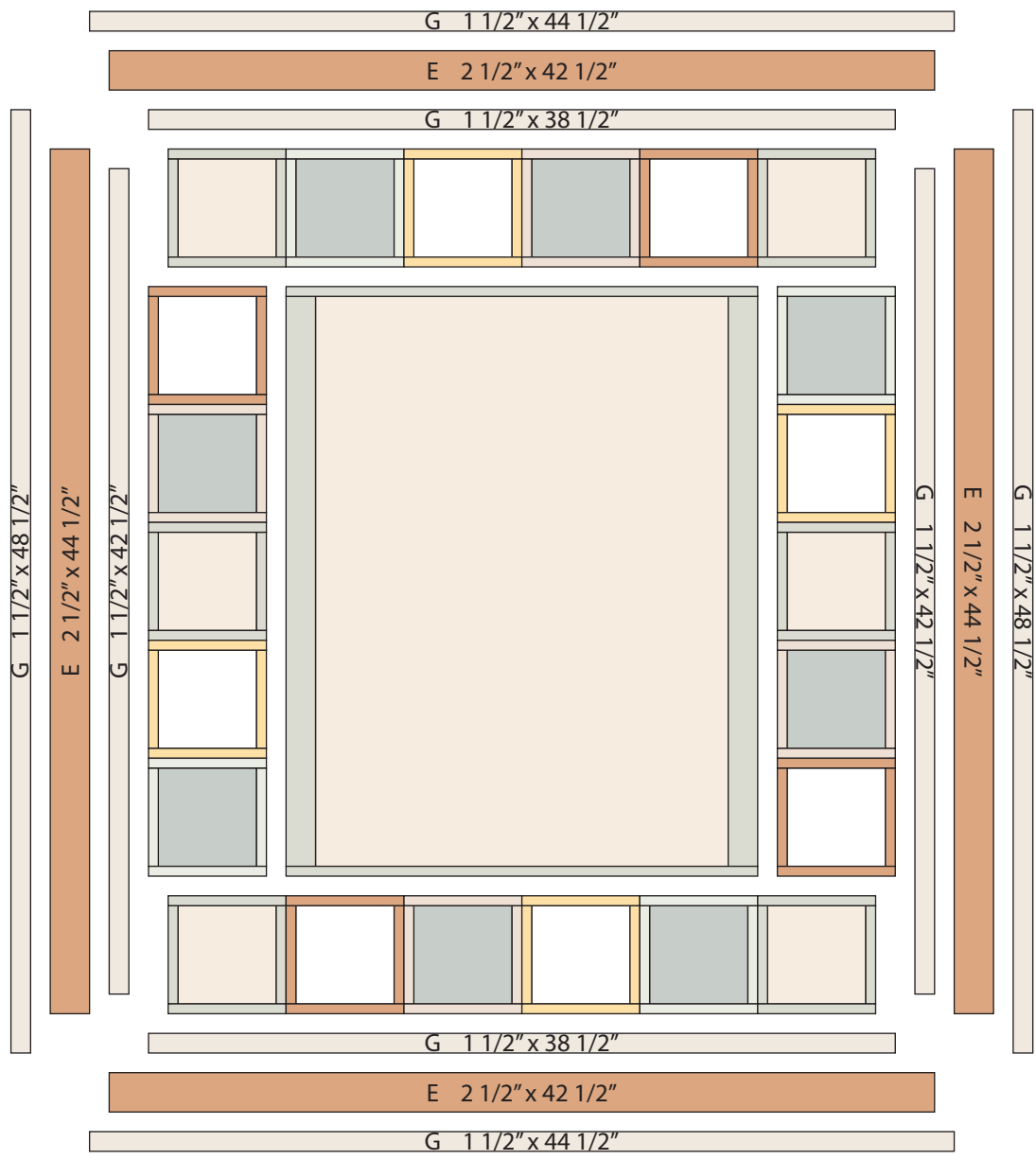


## *Finishing:*

12. Prepare backing using two widths of fabric with a vertical seam. Press seams open. Trim to 52" x 58".
13. Layer the quilt, batting and backing. Baste layers together.
14. Quilt as desired.
15. Trim layers even with quilt top, squaring corners.
16. Attach 2 1/2" **Fabric F** binding strips using your favorite method.

## *Quilt Assembly:*

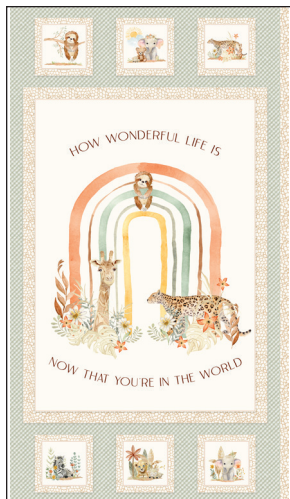
8. Sew the Left Side Border and Right Side Border to the left and right sides of the Quilt Center. Sew the Top Border and Bottom Border to the top and to the bottom of the Quilt Center.
9. Sew one 1 1/2" x 42 1/2" **Fabric G** strip to each side of the Quilt Center. Sew one 1 1/2" x 38 1/2" **Fabric G** strip to the top and bottom of the Quilt Center.
10. Sew one 2 1/2" x 44 1/2" **Fabric E** strip to each side of the Quilt Center. Sew one 2 1/2" x 42 1/2" **Fabric E** strip to the top and bottom of the Quilt Center.
11. Sew one 1 1/2" x 48 1/2" **Fabric G** strip to each side of the Quilt Center. Sew one 1 1/2" x 44 1/2" **Fabric G** strip to the top and bottom of the Quilt Center to make the Quilt Top.



Quilt Diagram

# Mini Menagerie

Fabric Collection by  
Audrey Jeanne Roberts



**MMEN6115-PA**  
**Fabric A**



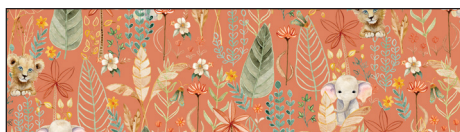
MMEN6116-MU



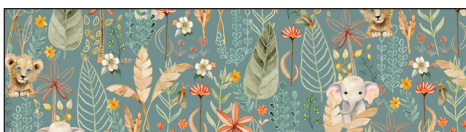
**MMEN6117-E**  
**Fabric B**



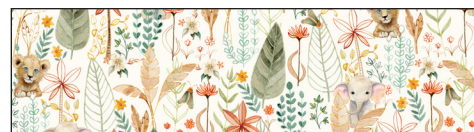
**MMEN6117-LT**  
**Fabric C**



MMEN6118-DJ



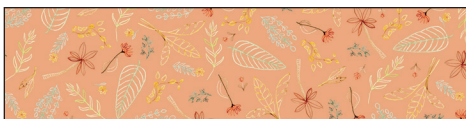
MMEN6118-DT



MMEN6118-E



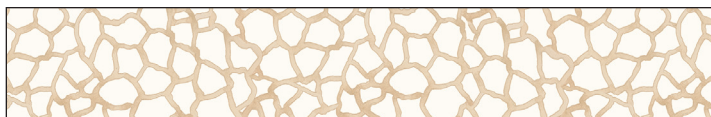
**MMEN6119-E**  
**Fabric D**



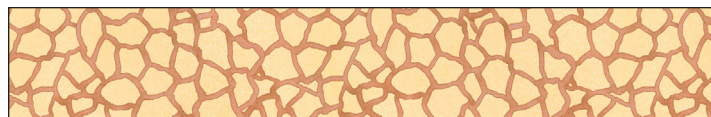
**MMEN6119-J**  
**Fabric E**



**MMEN6119-T\***  
**Fabric F**



**MMEN6120-E**  
**Fabric G**



**MMEN6120-Y**  
**Fabric H**



MMEN6121-EG



**MMEN6121-EJ**  
**Fabric I**



MMEN6121-ET



**MMEN6122-G**  
**Fabric J**



MMEN6122-MU

**Quilt Fabrics in Bold**

\* Binding

† Backing

P&B Textiles • pbtex.com • p800-351-9087 • 208 Clock Tower Square, Portsmouth, RI 02871

