

Spooky Spinners Quilt

Featuring Costumes & Cobwebs by
Club Hauer

Technique: Pieced & Applique

Skill Level: Advanced Beginner

Finished Size of Project:

60" x 60" (1.52m x 1.52m)

Finished Block Size:

14" x 14" (35.56cm x 35.56cm)

Project designed by: Stacey Day

All possible care has been taken to ensure the accuracy of this pattern. We are not responsible for printing errors or the manner in which individual work varies. Please read the instructions carefully before starting this project. If kitting, it is recommended a sample is made to confirm accuracy.



FABRIC REQUIREMENTS (Tech edited by: Julie Kentner)

	Design	Color	Item ID	Yardage
A	Ditsy Bats	Black	PWRH114.BLACK	¾ yard (0.34m)
B	Jack of Diamonds	Orange	PWRH116.ORANGE*	½ yard (0.46m)
C	Stars and Spiders	Orange	PWRH117.ORANGE	⅓ yard (0.30m)
D	Cobweb Lace	Black	PWRH118.BLACK	¾ yard (0.34m)
E	Cobweb Lace	White	PWRH119.WHITE	¾ yard (0.34m)
F	Full Moon Flight	Black	PWRH120.BLACK	⅓ yard (0.30m)
G	Cat Costumes	Panel	PWRH122.PANEL	1 PANEL
H	Sneaky Snakes	Black	PWRH123.BLACK	¼ yard (0.23m)
I	Ink Blot	Black	PWRH124.BLACK	¾ yard (0.34m)
J	Haunted Toile	Orange	PWRH125.ORANGE	¾ yard (0.34m)
K	Haunted Toile	White	PWRH126.WHITE	¾ yard (0.34m)
L	Venus Eye Trap	Orange	PWRH127.ORANGE	⅓ yard (0.30m)
M	Cross Stitch	Black	PWFS059.BLACK	4¼ yards (3.89m)

* includes binding

Backing (Purchased Separately)

44" (1.12m) wide

Pumpkin Party

Orange

PWRH121.ORANGE

3¾ yards (3.43m)

OR

108" (2.74m) wide

2 yards (1.83m)

Swatches



ADDITIONAL REQUIREMENTS

- 100% cotton thread in colors to match
- 68" x 68" (1.73m x 1.73m) Batting
- Template Plastic (optional)

CUTTING

WOF = Width of Fabric

HST = Half Square Triangle;

QST = Quarter Square Triangle

Template 1 pieces are not fussy cut – your results may vary,
making your quilt one-of-a-kind!

From Fabrics A and J:

(3) $4\frac{1}{8}$ " x WOF; sub-cut

(40) each Template 1

From Fabric B:

(7) $2\frac{1}{2}$ " x WOF for binding

From Fabric C:

(1) Template 2

From Fabrics D, E, I, & K:

(3) $4\frac{1}{8}$ " x WOF; sub-cut

(32) each Template 1

From Fabrics F, H, and L:

(2) each Template 2

From Fabric G:

(6) Template 2 fussy cut around motifs

From Fabric M:

(2) 21" x WOF; sub-cut

(2) 21" squares; sub-cut
on both diagonals into (8) QST

(2) $10\frac{3}{4}$ " squares; sub-cut
on one diagonal into (4) HST

(7) $14\frac{1}{2}$ " x WOF; sub-cut

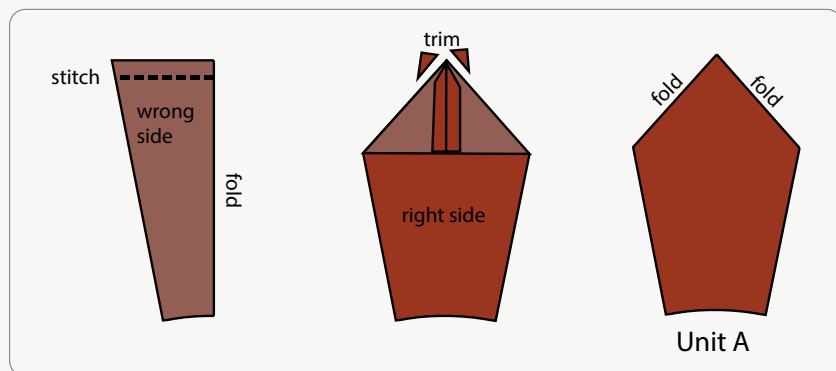
(13) $14\frac{1}{2}$ " squares

SEWING

RST = Right Sides Together

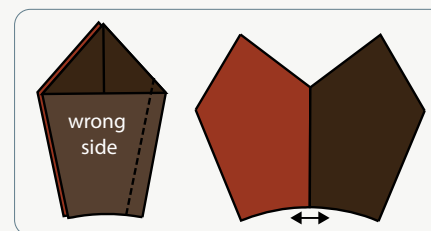
- 1 Fold (1) **Fabric A** piece RST. Sew a $\frac{1}{4}$ " seam across the top as shown (**Fig. 1**). Open and trim the corners at the tip of the piece. Turn right side out so that the wrong side and seam allowance is hidden. The top of the piece should have a sharp point, and the entire piece should lay flat. Press. Repeat to make (40) each **Unit A** of **Fabrics A** and **J**, and (32) each **Unit A** of **Fabrics D, E, I, and K**. **Trim away more of the seam allowance at the point if needed.**

Fig. 1



- 2 Sew (2) **Unit A** together as shown (**Fig. 2** shown top right), using the 1st & 2nd **Template 1** pairings listed below.

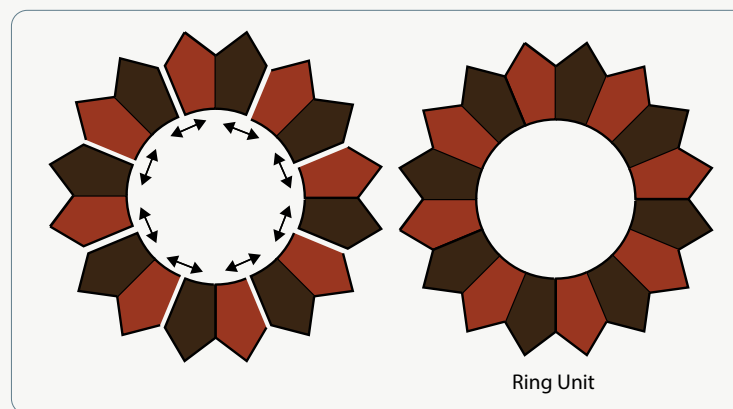
Fig. 2



Ring Unit	1st Template 1	2nd Template 1	Total Ring Units
1	Fabric A	Fabric J	5
2	Fabric D	Fabric K	4
3	Fabric E	Fabric I	4

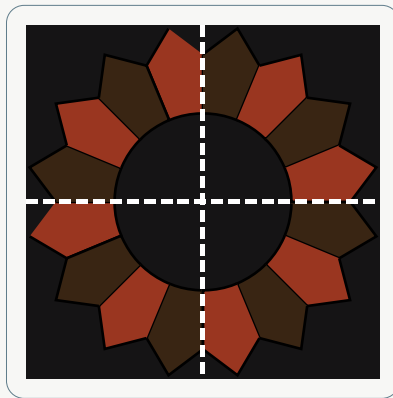
- 3 Sew (8) **Unit A** pairs together to make (1) **Ring Unit** (**Fig. 3**). Make the total number of **Ring Units** listed in the chart. Press seams open.

Fig. 3



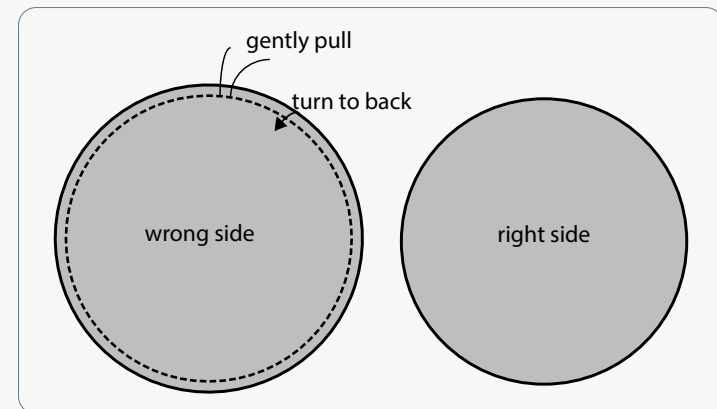
- 4** Fold (1) **Fabric M** 14½" square in half, then half again. Finger-press the folds to mark the centers of each side. Center and pin a **Ring Unit** onto the 14½" square, making sure the unit is flat. Baste ¼" around the inside circle and then topstitch around the outside pointed edge to secure the **Ring Unit** to the square (**Fig. 4**). Repeat to make a total of (13) **Ring Units**.

Fig. 4



- 5** Baste a scant ¼" around each **Template 2** piece as shown in **Figure 5**. Gently pull the threads so that the seam allowance starts to ease and turn to the wrong side. Press the seam allowance to the wrong side so that the circle lays flat and is a smooth curve.

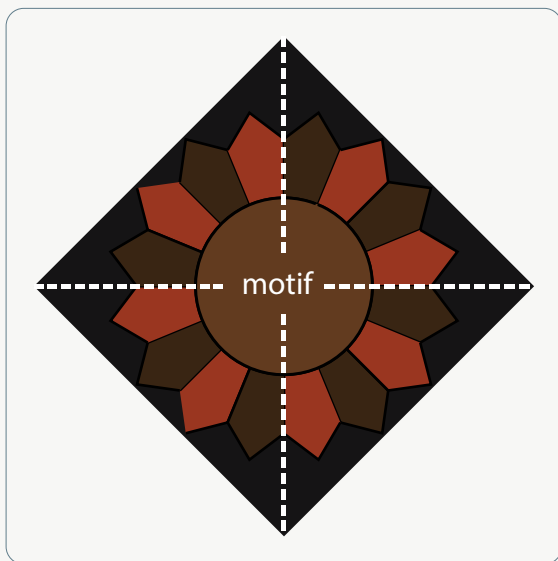
Fig. 5



- 6** Fold the **Template 2** pieces in half, and half again, finger pressing the folds to mark each of the four quadrants.

- 7** Turn a **Ring Unit** block on point and pin the corresponding **Template 2** circle in the center, covering the raw edge, and aligning the motif with the top corner as shown in **Figure 6**. Pin and topstitch around the circle to complete the block. Remove any basting stitches that may be visible after topstitching. Repeat for each pairing to make the total number of blocks listed in the chart below.

Fig. 6



Block	Ring Unit	Template 2	Quantity to Make
1	1	Fabric F	2
2	1	Fabric H	2
3	1	Fabric C	1
4	2	Fabric L	2
5	2	Fabric G (ghost, jester)	2
6	3	Fabric G	4

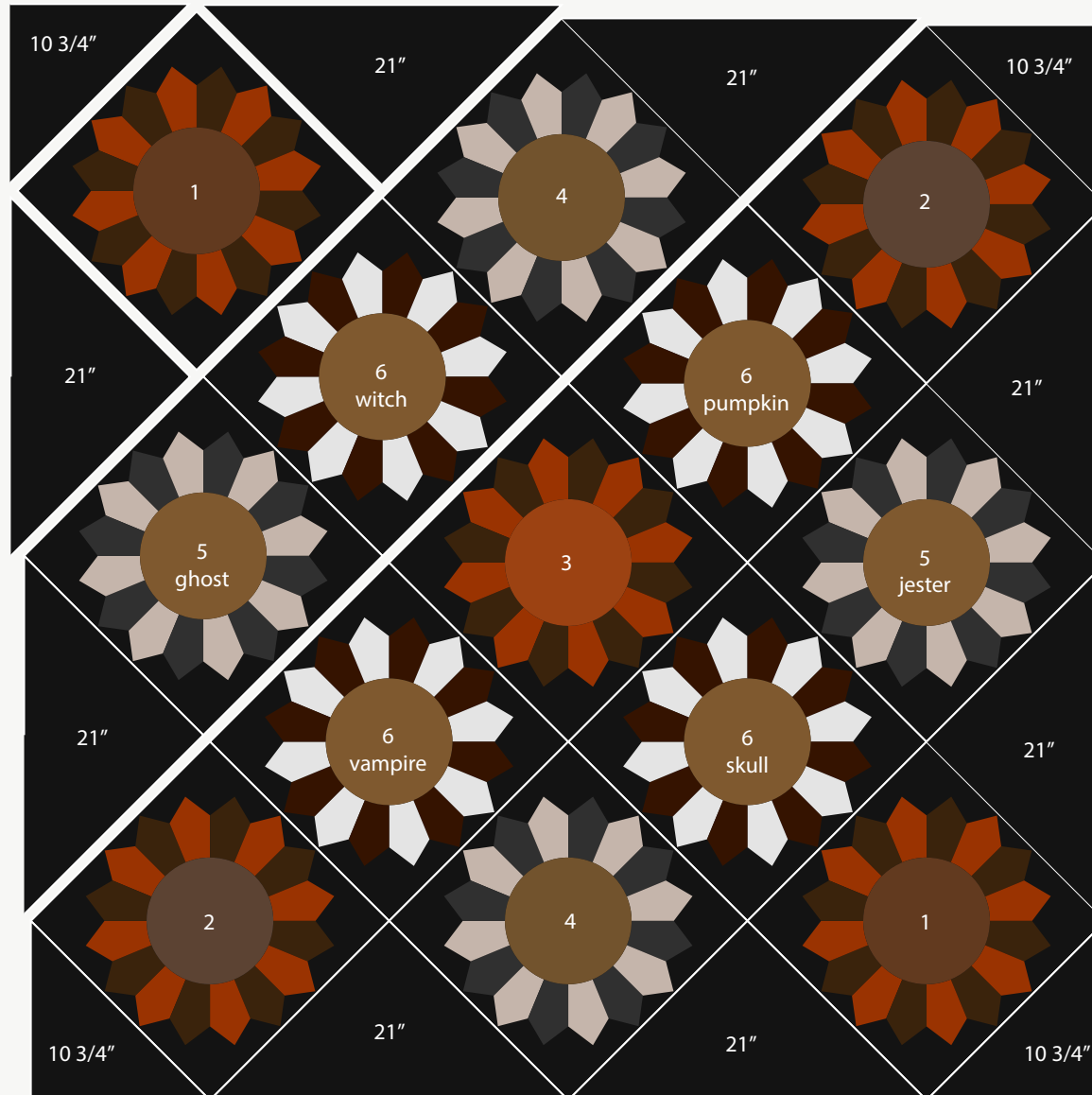
TOP ASSEMBLY

- 8** Sew the blocks, **Fabric M** 21" QSTs and **Fabric M** 10 $\frac{3}{4}$ " HSTs together into diagonal rows, referring to the **Quilt Layout** Diagram (page 8) for block placement and orientation in each row. Press even rows right and odd rows left. Sew the diagonal rows together to complete the quilt top.

FINISHING

- 9 Sew together (7) 2½" x WOF **Fabric B** binding strips end to end using diagonal seams. Press seams open. Press the binding strip in half wrong sides together and set aside until quilt is ready for binding.
- 10 Once the top is complete it is ready for quilting! Quilts can be sent out for longarm quilting or you can quilt it yourself. If you are sending the quilt out, it is important to discuss backing and batting requirements with the quilter to ensure they have everything needed to properly finish the quilt.
- 11 If quilting yourself and using 44" fabric for backing, choose your favorite method for piecing (taking time to remove selvages), then layer, baste and quilt. Once finished, trim excess batting and backing and bind according to your favorite method.
- 12 To complete binding by hand, it must first be machine sewn to the quilt top. Leaving an 8" tail of binding, sew binding to top of quilt through all layers, matching raw edges. Miter corners. Stop approximately 12" from where you started. Lay both loose ends of binding flat along quilt edge. Where the two loose ends meet, fold each side back on themselves and press to form a crease. Using this crease as your stitching line, sew the two open ends of the binding together right sides together. Trim seam to ¼" and press seam open. The binding will naturally fold, wrong sides together, and lay along the quilt edge. Finish sewing binding to quilt. Turn and press the binding to the back of the quilt and hand stitch in place.
- 13 If machine binding, complete the steps above only attach the binding to the BACK of the quilt, turn and press to the front of the quilt and machine stitch in place.

Quilt Layout

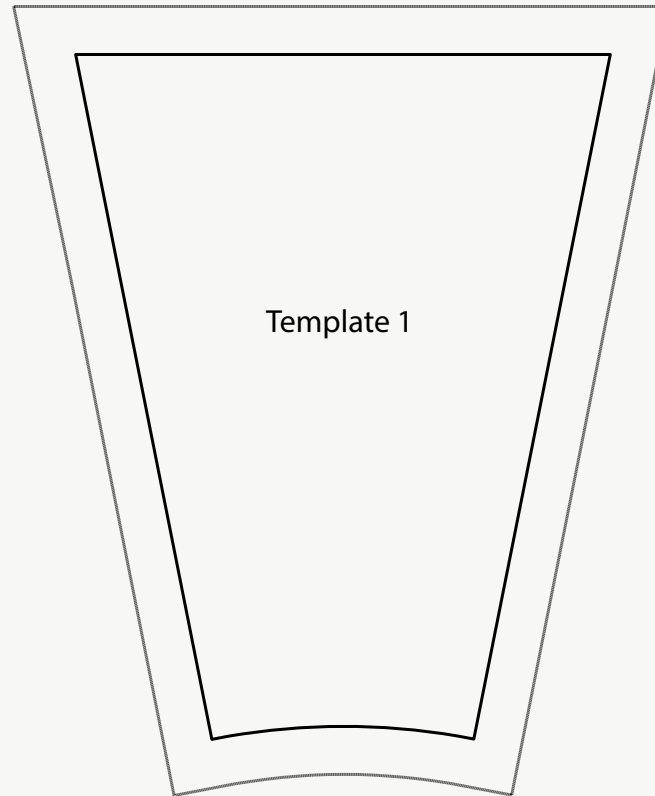


Template 2

This square should
measure 1" x 1"
(2.54cm x 2.54cm)
when printed.

***** Measure templates before cutting
to confirm printing at 100%*****

All possible care has been taken to ensure the accuracy of this pattern. We are not responsible for printing errors or the manner in which individual work varies. Please read the instructions carefully before starting this project. If kitting it is recommended a sample is made to confirm accuracy.



This square should
measure 1" x 1"
(2.54cm x 2.54cm)
when printed.

***** Measure templates before cutting
to confirm printing at 100%*****

All possible care has been taken to ensure the accuracy of this pattern. We are not responsible for printing errors or the manner in which individual work varies. Please read the instructions carefully before starting this project. If kitting it is recommended a sample is made to confirm accuracy.