



Free Spirit 

Rainbow Forest Quilt

Featuring Tula Pink Full Moon Forest II and
Tula Pink True Colors

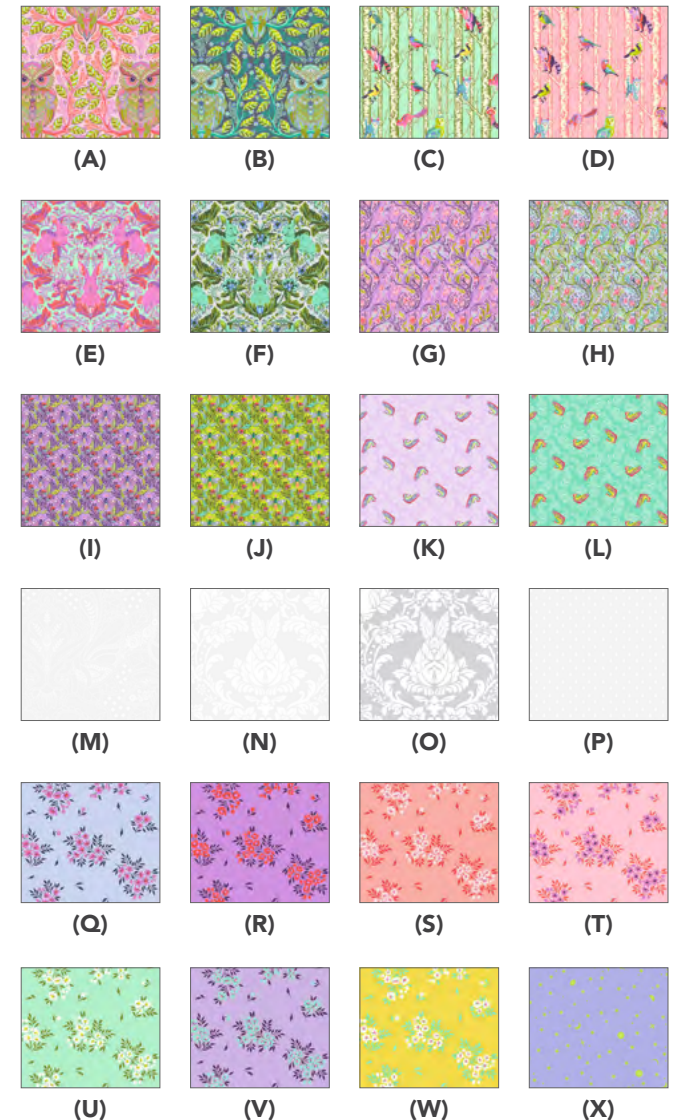
Collection:	Tula Pink Full Moon Forest II and Tula Pink True Colors
Technique:	Foundation Paper Pieced, Pieced
Skill Level:	Intermediate
Finished Sizes:	Finished Size: 93" x 93" (236.22cm x 236.22cm)
	Finished Block Size: 15" x 15" (38.10cm x 38.10cm)

All possible care has been taken to ensure the accuracy of this pattern. We are not responsible for printing errors or the manner in which individual work varies. Please read the instructions carefully before starting this project. If kitting, it is recommended a sample is made to confirm accuracy.

Project designed by Stacey Day | Tech edited by Alison M. Schmidt

Fabric Requirements

DESIGN	COLOR	ITEM ID	YARDAGE
(A) Hootie Patootie	Honey	PWTP244.HONEY	$\frac{7}{8}$ yard (0.80m)
(B) Hootie Patootie	Starlight	PWTP244.STARLIGHT	$\frac{7}{8}$ yard (0.80m)
(C) Family Tree	Enchanted	PWTP245.ENCHANTED*	1½ yards (1.37m)
(D) Family Tree	Honey	PWTP245.HONEY	$\frac{2}{3}$ yard (0.61m)
(E) Hoppy Go Lucky	Blossom	PWTP246.BLOSSOM	$\frac{3}{4}$ yard (0.69m)
(F) Hoppy Go Lucky	Starlight	PWTP246.STARLIGHT	$\frac{3}{4}$ yard (0.69m)
(G) Branch Manager	Blossom	PWTP247.BLOSSOM	$\frac{5}{8}$ yard (0.57m)
(H) Branch Manager	Starlight	PWTP247.STARLIGHT	$\frac{5}{8}$ yard (0.57m)
(I) Shake Your Honey Maker	Blossom	PWTP248.BLOSSOM	$\frac{5}{8}$ yard (0.57m)
(J) Shake Your Honey Maker	Enchanted	PWTP248.ENCHANTED	$\frac{3}{4}$ yard (0.69m)
(K) Sofishticated	Blossom	PWTP249.BLOSSOM	$\frac{1}{4}$ yard (0.23m)
(L) Sofishticated	Enchanted	PWTP249.ENCHANTED	$\frac{1}{4}$ yard (0.23m)
(M) Ghost Owl	Paper	PWTP250.PAPER	2½ yards (1.94m)
(N) Ghost Bunny	Paper	PWTP251.PAPER	2 yards (1.83m)
(O) Ghost Bunny	Whisper	PWTP251.WHISPER	2½ yards (2.63m)
(P) Ghost Droplettes	Paper	PWTP252.PAPER	1 yard (0.91m)
(Q) What a Ditz	Frost	PWTP253.FROST	$\frac{1}{4}$ yard (0.23m)
(R) What a Ditz	Heliotrope	PWTP253.HELIOTROPE	$\frac{1}{4}$ yard (0.23m)
(S) What a Ditz	Peachykeen	PWTP253.PEACHYKEEN	$\frac{1}{4}$ yard (0.23m)
(T) What a Ditz	Pink Lemonade	PWTP253.PINKLEMONADE	$\frac{1}{4}$ yard (0.23m)
(U) What a Ditz	Spearmint	PWTP253.SPEARMINT	$\frac{1}{4}$ yard (0.23m)
(V) What a Ditz	Viola	PWTP253.VIOLA	$\frac{1}{4}$ yard (0.23m)
(W) What a Ditz	Buttercup	PWTP253.BUTTERCUP	$\frac{1}{4}$ yard (0.23m)
(X) Space Sprinkles	Dream	PWTP254.DREAM	$\frac{1}{4}$ yard (0.23m)



continued...

Fabric Requirements (continued...)

DESIGN	COLOR	ITEM ID	YARDAGE
(Y) Space Sprinkles	Frozen Berry	PWTP254.FROZENBERRY	¼ yard (0.23m)
(Z) Space Sprinkles	Lightning Bug	PWTP254.LIGHTNINGBUG	¼ yard (0.23m)
(AA) Space Sprinkles	Papaya	PWTP254.PAPAYA	¼ yard (0.23m)
(AB) Space Sprinkles	Piglet	PWTP254.PIGLET	¼ yard (0.23m)
(AC) Space Sprinkles	Sea Glass	PWTP254.SEAGLASS	¼ yard (0.23m)
(AD) Space Sprinkles	Sunburn	PWTP254.SUNBURN	¼ yard (0.23m)
(AE) Space Sprinkles	Waterfall	PWTP254.WATERFALL	¼ yard (0.23m)
(AF) On the Grid	Apple	PWTP255.APPLE	¼ yard (0.23m)
(AG) On the Grid	Bubblegum	PWTP255.BUBBLEGUM	¼ yard (0.23m)
(AH) On the Grid	Highlighter	PWTP255.HIGHLIGHTER	¼ yard (0.23m)
(AI) On the Grid	Mysterious	PWTP255.MYSTERIOUS	¼ yard (0.23m)
(AJ) On the Grid	Raindrop	PWTP255.RAINDROP	¼ yard (0.23m)
(AK) On the Grid	Salmon	PWTP255.SALMON	¼ yard (0.23m)
(AL) On the Grid	Shoreline	PWTP255.SHORELINE	¼ yard (0.23m)

* includes binding

Backing (Purchased Separately)

44" (1.12m) wide

Hootie Patootie

Honey

PWTP244.HONEY

8⅔ yards (7.93m)

OR

108" (2.74m) wide

Free Fall

Blossom

QBTP018.BLOSSOM

3 yards (2.74m)



Additional Recommendations

- 100% cotton thread in colors to match
- 101" x 101" (2.56m x 2.56m) batting
- 8½" x 11" foundation paper, 50 sheets

Optional but helpful:

- Spray starch or starch alternative
- 8" square rotary cutting ruler
- Add-a-Quarter ruler

Preparation

1. Print 32 copies of foundation patterns 1A and 1B (page 10) and 18 copies of foundation patterns 1C and 1D (page 11) at 100% and measure to confirm accuracy of printout.
2. Cut out all the foundation patterns on the outermost line.

Cutting

WOF = Width of Fabric

Note:

- This pattern assumes a knowledge of foundation paper piecing. If you are new to the technique, use scraps and an extra foundation pattern to make a test unit before beginning to sew.
- Press all fabrics to be fussy cut with spray starch or starch alternative, let dry, then press before fussy cutting to help stabilize bias edges. Handle bias-cut pieces carefully to avoid stretching or distorting.

From Fabrics A, B, D, and G, fussy cut from each:

(4) 8" x 8", on point around desired motifs

From Fabric C, cut:

(2) 8" x 8", fussy cut on point around desired motifs
enough 2½"-wide bias strips to make 392" (9.96m) of bias binding

* If you prefer to make continuous bias binding, instead start with a 35" square.

From Fabric E, F, and H, fussy cut from each:

(2) 8" x 8", on point around desired motifs

From Fabric I, fussy cut:

(36) 3½" x 3½", on point centered on the bees

Tip: use a long ruler to cut 3½"-wide bias strips, then subcut into squares.

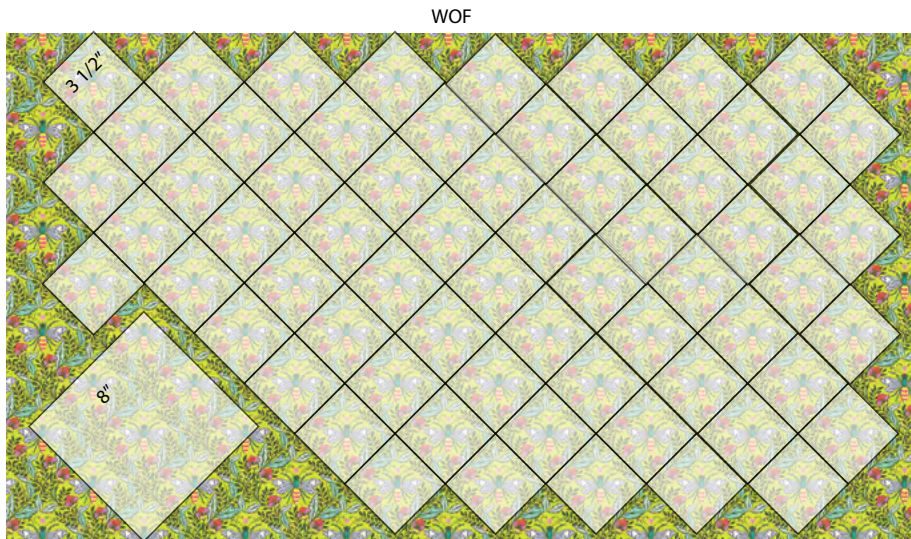
Fabric I Cutting Diagram



From Fabric J, fussy cut:

- (1) 8" x 8" , on point centered on the bee motifs
- (64) 3½" x 3½", on point centered on the bees

Fabric J Cutting Diagram



From Fabrics K, S, T, W, Z, AA, AB, AD, AF, AG, AH, and AK, cut from each:

- (1) 4¾" x WOF; subcut
- (8) 4¾" x 4¾", then cut on both diagonals into (32) triangles

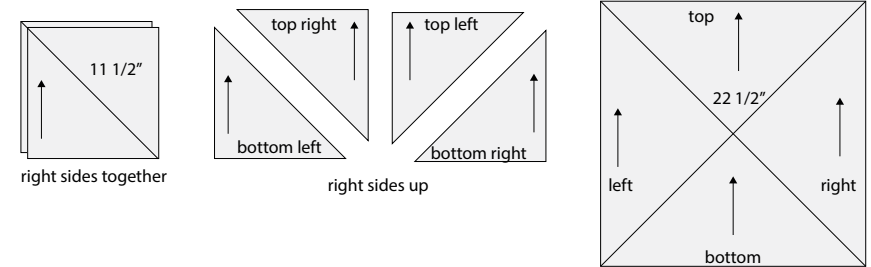
From Fabrics L, Q, R, U, V, X, Y, AC, AE, AI, AJ, and AL, cut from each:

- (1) 4¾" x WOF; subcut
- (5) 4¾" x 4¾", then cut on both diagonals into (20) triangles (there will be 2 extra of each fabric)

From Fabric M, cut:

- (3) 22½" x WOF strips; subcut
- (3) 22½" x 22½", then cut on both diagonals into (12) directional side setting triangles
- (2) 11½" x 11½", place right sides together with the motif oriented the same direction, and cut on the diagonal from top left to bottom right into (4) directional corner setting triangles

Fabric M Cutting diagram



From Fabric N, cut:

- (15) 2" x WOF for long sashing strips
- (16) 2" x WOF, then subcut
- (32) 2" x 15½" for block row sashing

From Fabric O, cut:

- (38) 2½" x WOF; subcut
- (600) 2½" x 2½", then cut on one diagonal into (1200) triangles

From Fabric P, cut:

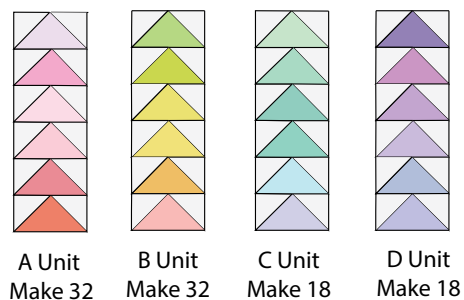
- (23) 1¼" x WOF; subcut
- (50) 1¼" x 9½"
- (50) 1¼" x 8"

Instructions

Notes:

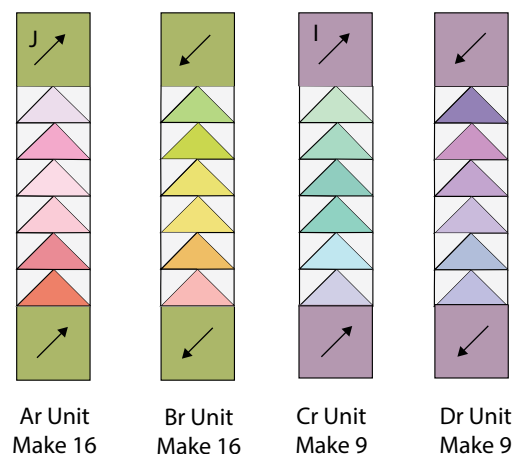
- All seam allowances are $\frac{1}{4}$ " and pieces are sewn right sides together.
 - When sewing a bias edge to a straight-of-grain edge, make sure to pin at both ends and sew with the bias edge towards the feed dogs to help minimize stretching.
 - Press seam allowances open unless otherwise stated, or when foundation piecing. Remember to switch to a new needle and adjust stitch length back to normal after all foundation piecing is completed.
1. Using your preferred method of foundation paper piecing, make 32 A Units and 32 B Units using Foundations 1A and 1B, and the pieces in the fabrics and cut sizes printed on the foundations. In the same manner, make 18 C Units and 18 D Units, using Foundations 1C and 1D. Trim all units on the outer solid line to $3\frac{1}{2}$ " x $9\frac{1}{2}$ " and carefully remove the papers.

Fig. 1



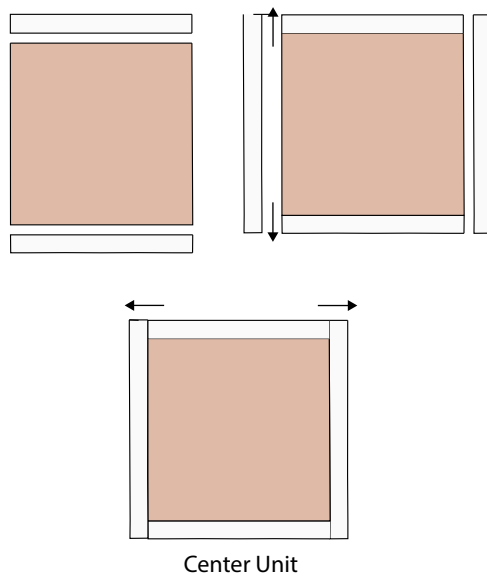
2. Sew a pair of **Fabric J** $3\frac{1}{2}$ " fussy-cut squares to opposite ends of (16) A Units and (16) B Units as shown, paying close attention to the orientation of the **Fabric J** motif, to make Ar Units and Br Units. Repeat with **Fabric I** $3\frac{1}{2}$ " fussy-cut squares and (9) each of C and D Units to make 9 each Cr Units and Dr Units.

Fig. 2



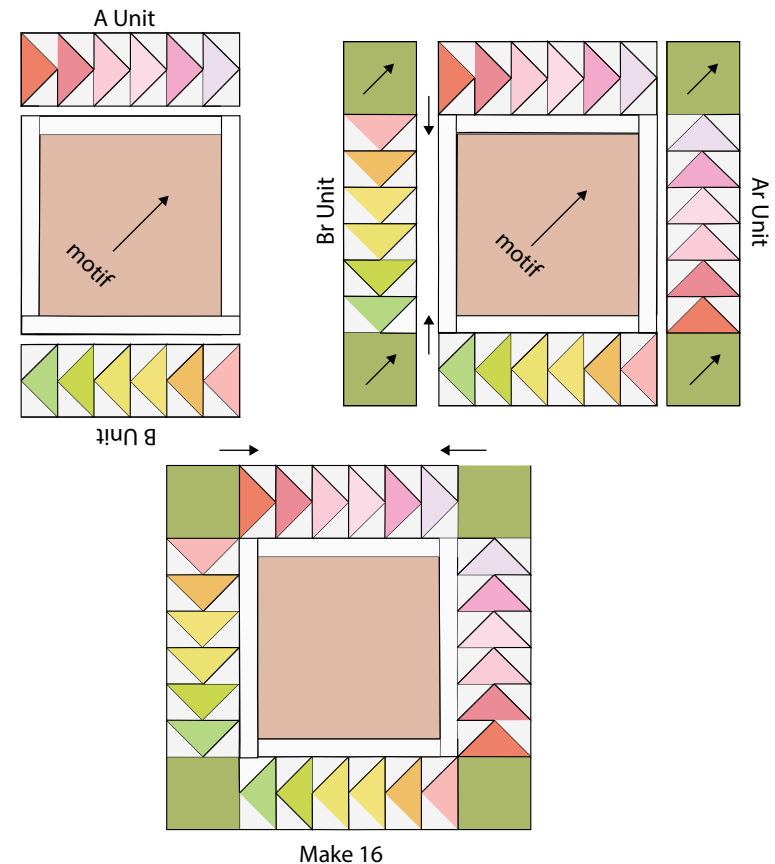
3. Sew a pair of **Fabric P** $1\frac{1}{4}$ " x 8" strips to opposite sides of a **Fabric A** 8" x 8" fussy-cut square. Press towards **Fabric P**, then sew the **Fabric P** $1\frac{1}{4}$ " x $9\frac{1}{2}$ " strips to the remaining sides as shown. Press towards **Fabric P**. Repeat for each **Fabrics A-H** 8" x 8" fussy-cut square to complete a total of 25 Center Units.

Fig. 3



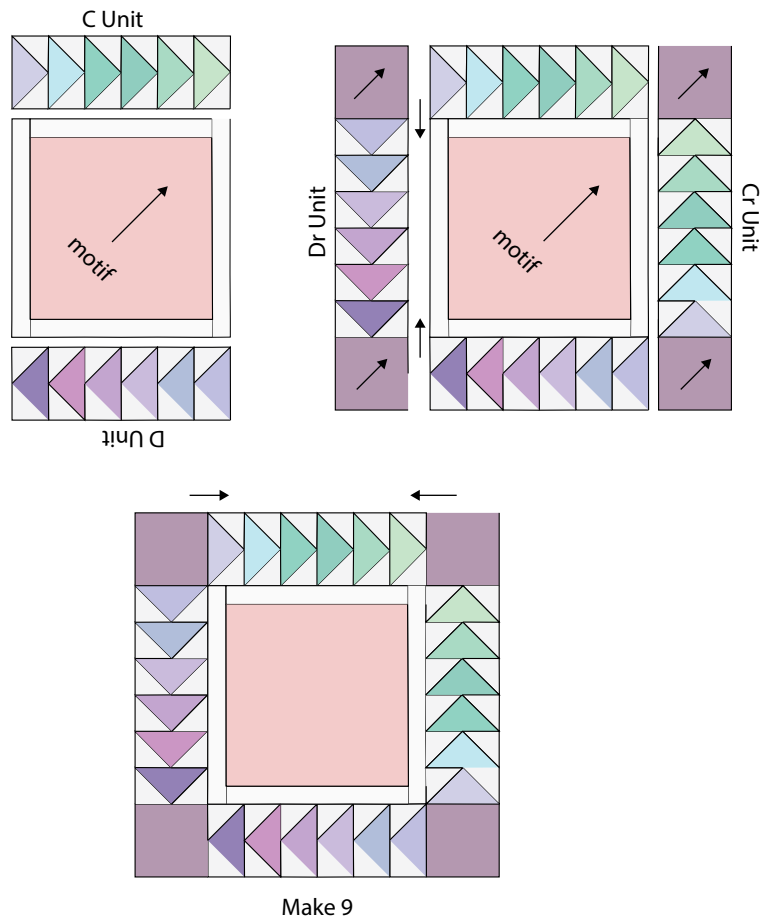
4. Arrange and sew an A Unit and a B Unit to the top and bottom of a **Fabric A** Center Unit as shown, noting orientation of the center square and the foundation-pieced units. Press towards the Center Unit. Then sew a Br Unit to the left-hand side and an Ar Unit to the right-hand side, oriented as shown. Press in the same direction as before to complete Block A. Make (4) total. Repeat to make (4) blocks with **Fabric B** Center Units, and (2) each with **Fabrics C, D, E, and H** Center Units (16 blocks total).

Fig. 4



5. Repeat the previous step using **C**, **D**, **Cr**, and **Dr** Units with **Fabric C**, **E**, **F**, **G**, and **J** Center Units to make (2) blocks each with **Fabrics C**, **E**, **F**, and **G**, and (1) with **Fabric J**.

Fig. 5



Quilt Top Assembly

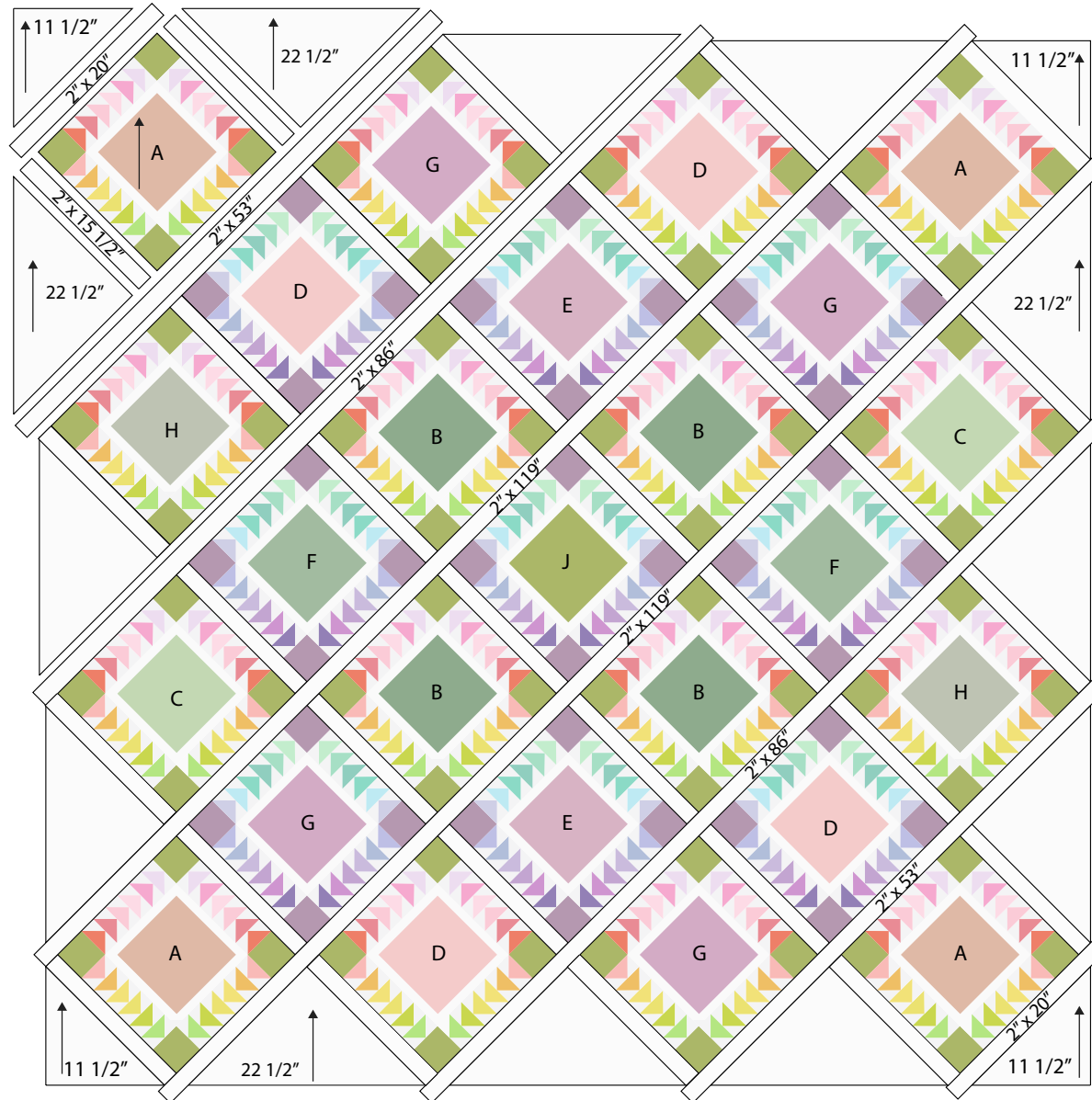
Note: Follow the **Quilt Layout** diagram (page 9) while assembling the quilt. Press seam allowances towards the Sashing Strips.

- From the reserved **Fabric N** 2" x WOF strips, sew together end to end and cut (2) sashing strips each in the following lengths: 119", 86", 53", and 20".
- Arrange the blocks on point in (7) diagonal rows, making sure all directional prints are oriented right-reading. Add **Fabric M** 22½" and 11½" triangles as shown at ends of the rows and **Fabric N** 2" x 15½" sashing strips between each block and triangle, making sure the **Fabric M** directional prints are oriented right-reading.
- Sew the blocks, triangles, and sashing strips into diagonal rows.
- Sew the rows together, centering the **Fabric N** long sashing strips, between them as noted in the diagram, then add the remaining (2) 11½" triangles to complete the quilt top. Trim the sashing ends even with the edges of the setting triangles.

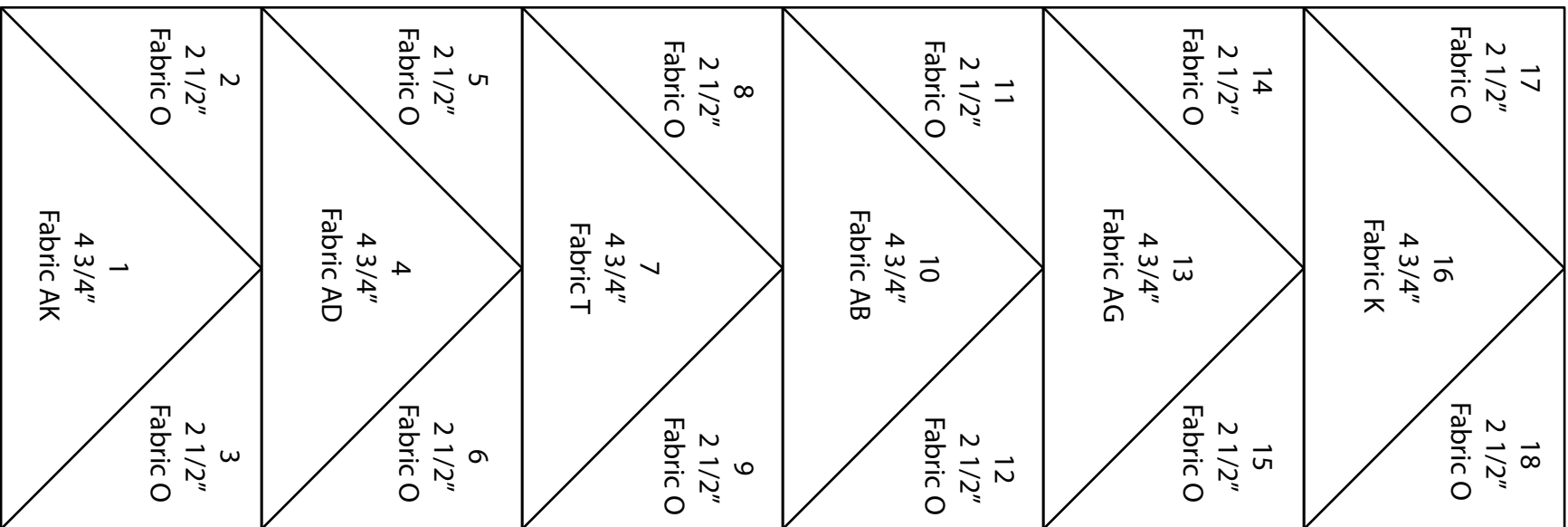
Finishing

- Sew together the 2½" **Fabric C** bias binding strips end-to-end. Press seams open. Press the binding strip in half wrong sides together.
- Layer backing (wrong side up), batting, and quilt top (right side up). Baste the layers together and quilt as desired. Trim excess batting and backing even with the top after quilting is completed.
- Leaving an 8" tail of binding, sew binding to the top of the quilt through all layers matching all raw edges. Miter corners. Stop approximately 12" from where you started. Lay both loose ends of binding flat along quilt edge. Where the loose ends meet, fold them back on themselves and press to form a crease. Using this crease as your stitching line, sew the two open ends of the binding right sides together. Trim seam to ¼" and press open. Finish sewing binding to quilt.
- Turn the binding to the back of quilt and hand-stitch in place.

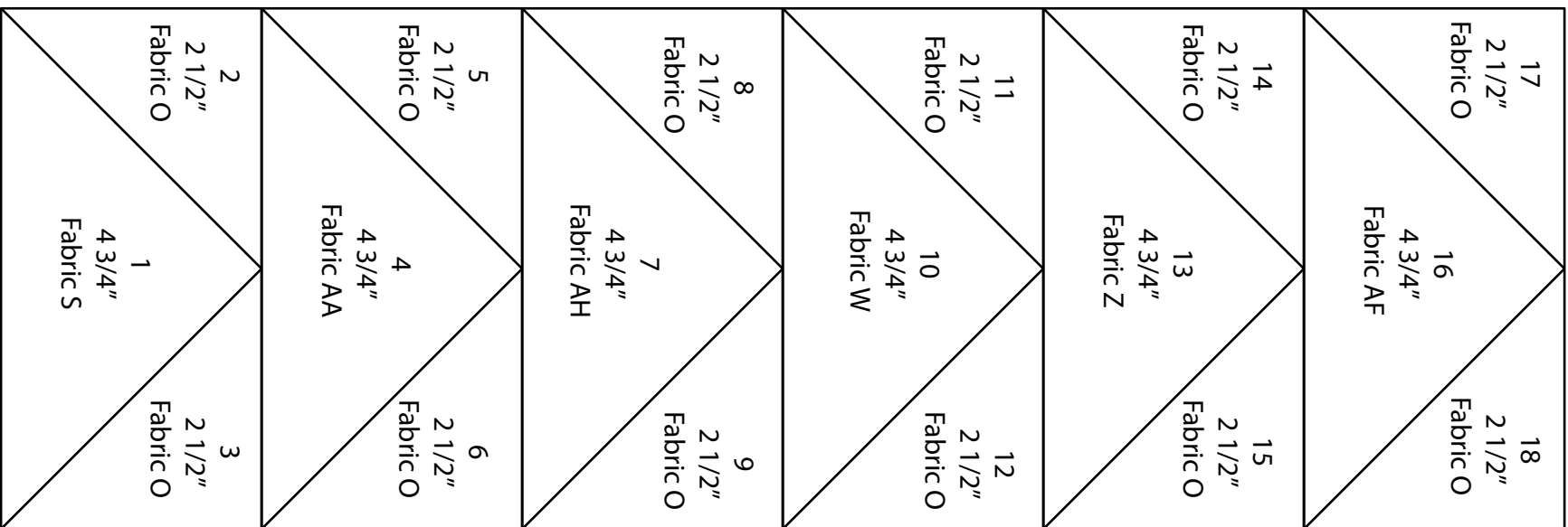
Quilt Layout



Rainbow Forest Foundation 1A



Rainbow Forest Foundation 1B

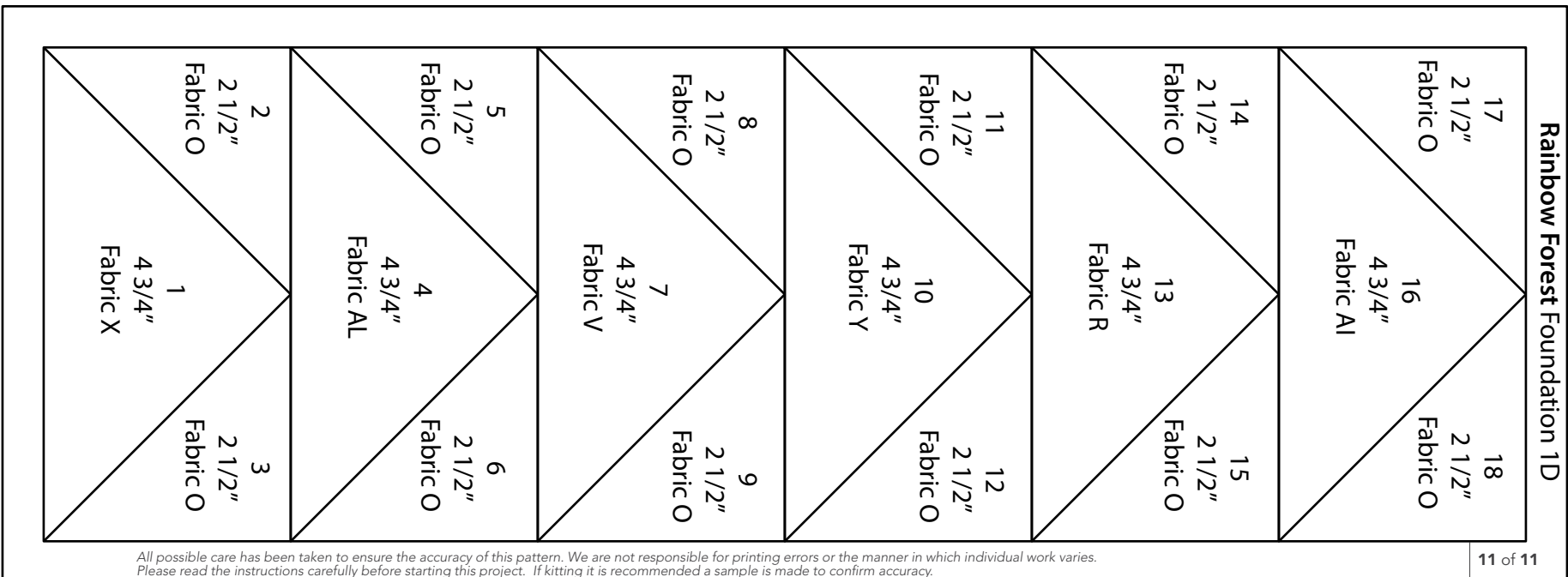
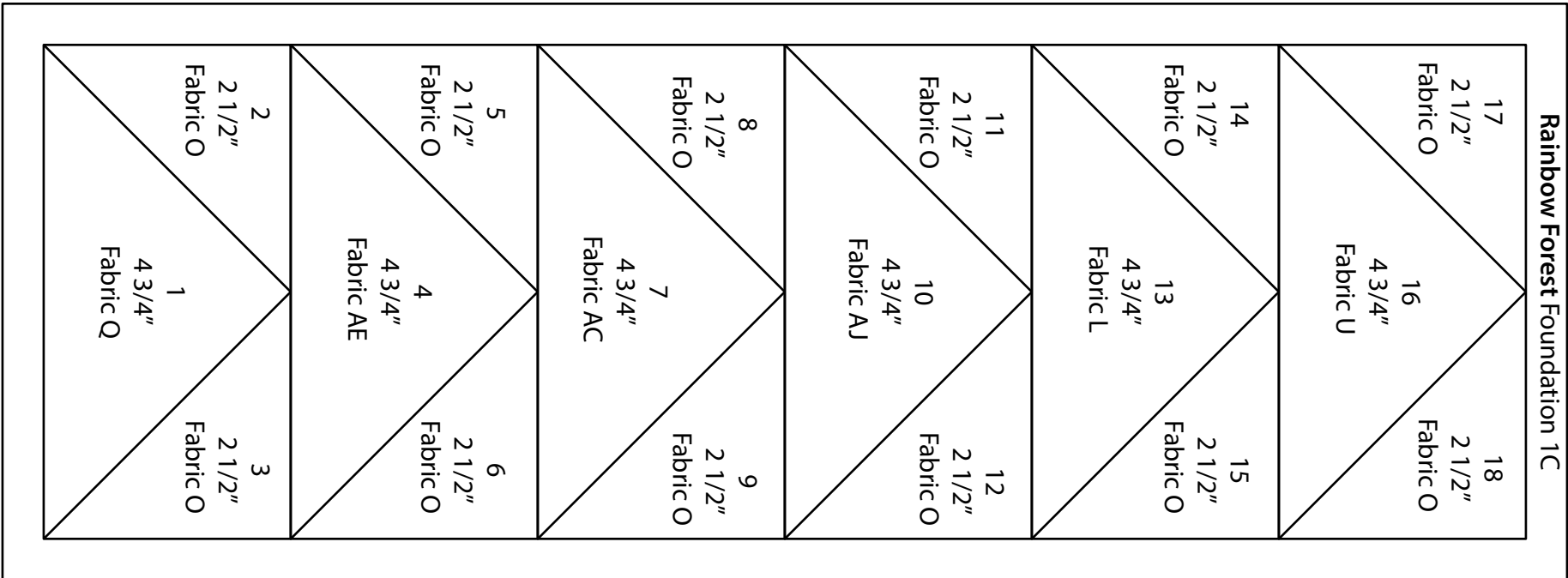


All possible care has been taken to ensure the accuracy of this pattern. We are not responsible for printing errors or the manner in which individual work varies. Please read the instructions carefully before starting this project. If kitting it is recommended a sample is made to confirm accuracy.

Print 32 each of Foundations 1A and 1B.

*** Measure templates before cutting to confirm printing at 100%***

This square should measure 1" x 1" (2.54cm x 2.54cm) when printed.



All possible care has been taken to ensure the accuracy of this pattern. We are not responsible for printing errors or the manner in which individual work varies. Please read the instructions carefully before starting this project. If kitting it is recommended a sample is made to confirm accuracy.

Print 18 each of Foundations 1C and 1D.

This square should
measure 1" x 1"
(2.54cm x 2.54cm)
when printed.

*** Measure templates before cutting to confirm printing at 100%***